

SINGLE AND MULTIPLE BEETLECOIN MASTERNODES SETUP GUIDE FOR WINDOWS



BEETLECOIN

BEETLCOIN.IO

2018

SINGLE MASTERNODE SETUP GUIDE

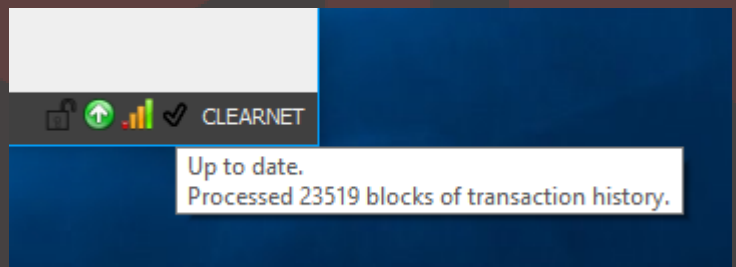
This is a step-by-step guide for starting a **single BeetleCoin masternode** on **Windows 7 – 10** operating systems.

REQUIREMENTS:

- BeetleCoin wallet running on your local **Windows 7 – 10** computer with at least **50001 BEET**
- White static IP with open port for MN

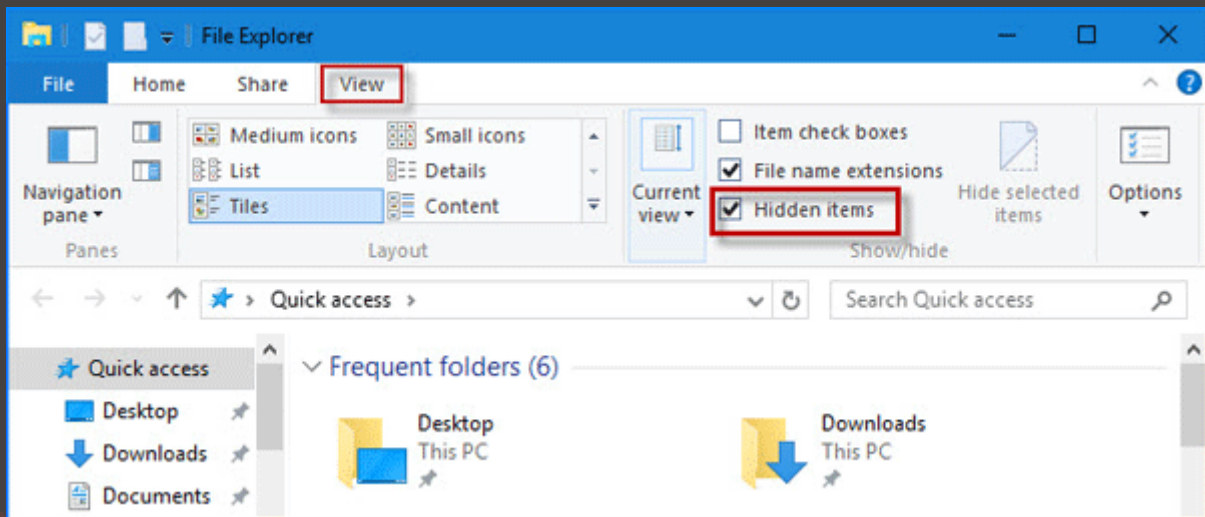
STEP 1: DOWNLOADING AND SYNCHRONIZING THE WALLET

1. **Download** the BeetleCoin wallet at our [website](#).
2. Run the **Beetle-qt.Windows.exe** wallet for the 1st time.
3. Your firewall and antivirus might pop up to allow connection. Please allow all the connections by making the appropriate tick marks.
4. In the lower right hand corner of the wallet user interface, you will see «**Synchronizing with network**» and other sync messages each time you open your BeetleCoin wallet. Wait until the synchronization is completed. It may take up to 30 minutes. After it synchronizes, you will see that it is «**Up to date**».



STEP 2: CONFIGURING THE WALLET

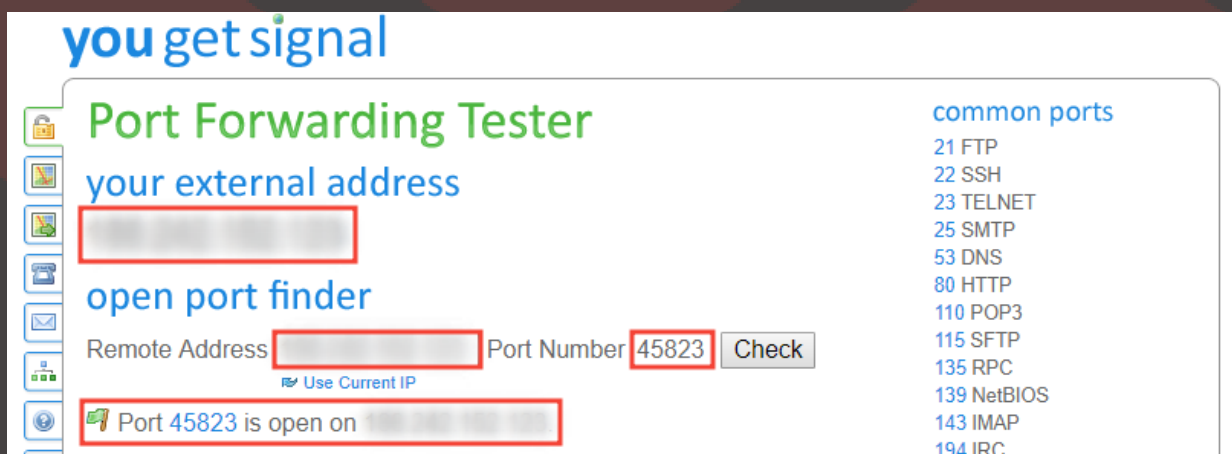
1. Go to «**Receive**» tab.
2. Press the «**New address**» button and enter «**MN1**» in «**Label**» field. **Do not** tick the «**Stealth address**» checkbox. This is your **MASTERNODE DEPOSIT ADDRESS**, where you will deposit your coins to create a masternode.
3. Send exactly **50000 BEET** to this address by one transaction.
4. Wait for **15 confirmations** of the transaction and then go to the «**Help**» ->«**Debug window**» ->«**Console**».
5. Run the «**masternode genkey**» command and write down the result. The generated key is your **MASTERNODE PRIVATE KEY**. **Do not disclose it to anyone!**
6. Open the **Beetle.conf** configuration file, which is situated in **C:\Users\Your_user_name\AppData\Roaming\Beetle** folder in Notepad. AppData folder is usually hidden so to enable it you should open an explorer window then click «**View**» tab and tick «**Hidden items**» box.



- Paste the following into the **Beetle.conf** configuration file substituting «**YOURIP**» and «**MASTERNODEPRIVATEKEY**» with your data:

```
rpcuser=ANYTHINGHERE
rpcpassword=ANYTHINGHERE
listen=1
allowip=127.0.0.1
staking=0
rpcport=47620
port=45823
masternode=1
masternodeaddr=YOURIP:45823
masternodeprivkey=MASTERNODEPRIVATEKEY
```

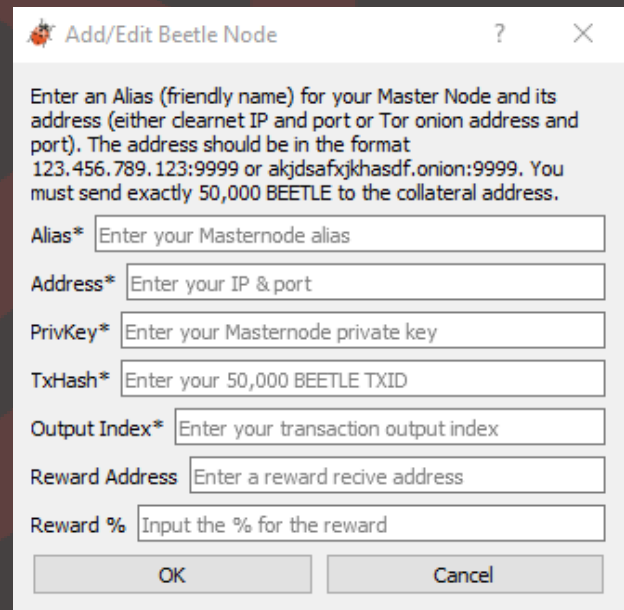
- You can find out your IP by using the **Yougetsignal** service. You are free to choose any port but keep in mind that it should be opened which can also be checked with **Yougetsignal**. If the port is closed you should allow it in your firewall software or open it by configuring your router.



- Now save and close the **Beetle.conf** configuration file.
- Close the wallet by going to «**File**» -> «**Exit**» or by pressing **Ctrl-Q**.
- Run the **Beetle-qt.Windows.exe** wallet again.
- Go to the «**Help**» ->«**Debug window**» ->«**Console**» and run «**masternode start**» command there. You will see «**masternode started successfully**» response.

STEP 3: CHECKING YOUR MASTERNODE

1. Click the «**Masternodes**» tab that is now visible.
2. You should now see your new Masternode appear in the list of BeetleCoin Masternodes at the «**Beetle Network**» tab.
3. Go to the «**Help**» ->«**Debug window**» ->«**Console**».
4. Run the «**masternode outputs**» command and write the hex numbers down. This is your **MASTERNODE TRANSACTION ID** and the digit after «:» is the **TX OUTPUT INDEX**.
5. You will get an output like:
6. «46735a7d867d33cf34925c32f38004268e131e99a582155113e77f8ca3829FG6» : «0»
7. Go to the «**Masternodes**» tab and switch to the «**My Masternodes**» tab.
8. Press the «**Create**» button.
9. Enter «**MN1**» into the «**Alias**» field but do not use spaces and special characters.
10. Enter «**YOURIP:45823**» into the «**Address**» field.
11. Enter the **MASTERNODE PRIVATE KEY** that you generated with «**masternode genkey**» command into the «**Privkey**» field.
12. Enter the **MASTERNODE TXID** from the «**masternode outputs**» command into the «**TxHash**» field.



Add/Edit Beetle Node

Enter an Alias (friendly name) for your Master Node and its address (either clearnet IP and port or Tor onion address and port). The address should be in the format 123.456.789.123:9999 or akjdsafxjkhasdf.onion:9999. You must send exactly 50,000 BEETLE to the collateral address.

Alias*

Address*

PrivKey*

TxHash*

Output Index*

Reward Address

Reward %

- «46735a7d867d33cf34925c32f38004268e131e99a582155113e77f8ca3829FG6» : «0»
13. Enter the **TX OUTPUT INDEX** from the «**masternode outputs**» command into the «**Output Index**» field.
 - «46735a7d867d33cf34925c32f38004268e131e99a582155113e77f8ca3829FG6» : «0»
 14. Now you can press «**Ok**».
 15. Close the wallet by going to «**File**» -> «**Exit**» or by pressing **Ctrl-Q**.
 16. Run the **Beetle-qt.Windows.exe** wallet again.
 17. Go to the «**Masternodes**» tab and switch to the «**My Masternodes**» tab.
 18. If you locked your wallet before you should unlock it before the next step.
 19. Press the «**Update**» button and then press the «**Start All**» button.
 20. You should see «**Masternode is Running**» message in the «**Status**» field now.

All Masternodes need to be active for a certain amount of blocks before they are recognized by the network and eligible for rewards.

Congratulations, your BeetleCoin Masternode is now running!

MULTIPLE MASTERNODES SETUP GUIDE

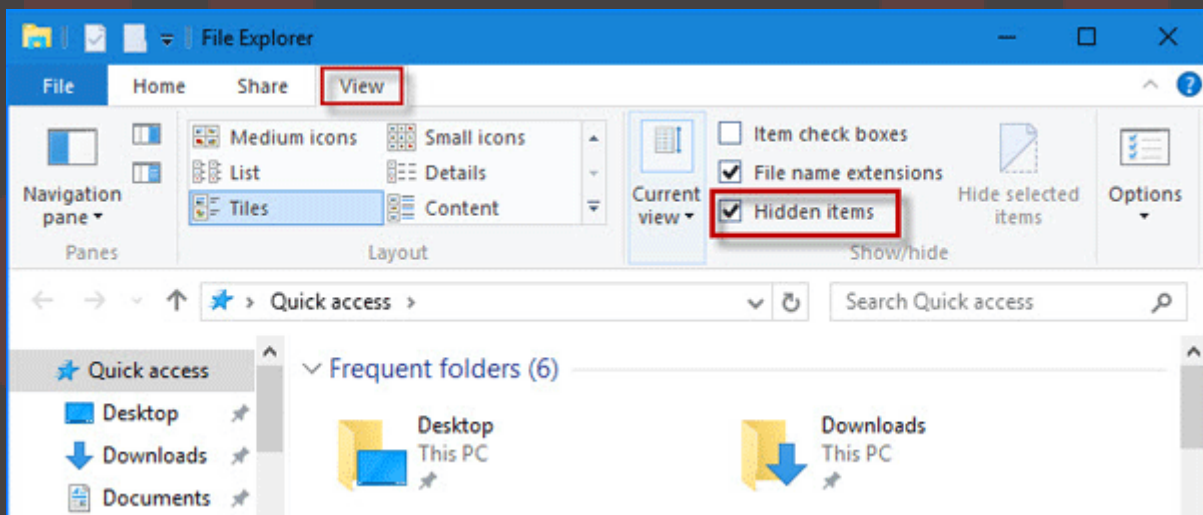
This is a step-by-step guide for starting **multiple BeetleCoin masternodes** (3 masternodes in this example) on **Windows 7 – 10** operating systems.

REQUIREMENTS:

- BeetleCoin wallet running on your local **Windows 7 – 10** computer with at least **50000 BEET** for every MN
- White static IP with open ports for MNs

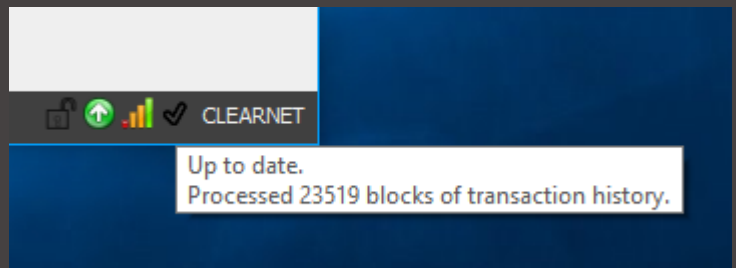
STEP 1: PREPARING MASTERNODES

1. Choose a place where you will hold your masternodes directories. You will need approximately **1Gb** of free space for each MN. Now their size is much less but it will consume more space in future.
2. Create «**BEET_MN1**» folder there.
3. Copy «**Beetle-qt.Windows.exe**» file in the «**BEET_MN1**» folder .
4. Create a new folder named «**data**» inside the «**BEET_MN1**» folder.
5. Copy «**blk0001.dat**» file and «**txleveldb**» folder which are situated in **C:\Users\Your_user_name\AppData\Roaming\Beetle** folder into the newly created «**data**» folder. AppData folder is usually hidden so to enable it you should open an explorer window then click «**View**» tab and tick «**Hidden items**» box.



6. Rename the «**Beetle-qt.Windows.exe**» file to the «**Beet_mn1.exe**»
7. Press **Win+R** and type «**cmd**» then press «**Enter**» button
8. Now paste there this line:
echo start Beet_mn1.exe -datadir=./data > %homepath%/Desktop/start_beet_mn1.cmd
9. Move the «**start_beet_mn1.cmd**» file from your Desktop to the «**BEET_MN1**» folder
10. Repeat the process for each masternode you want to create from the 2nd step, but changing MN1 to MN2, MN3 and so on.

- Run «**start_beet_mn1.cmd**», «**start_beet_mn2.cmd**» and «**start_beet_mn3.cmd**», wait for the wallets loading and full synchronizing with the block chain. After it synchronizes, you will see that it is «**Up to date**».



- When everything is loaded and synchronized, you can exit from each running masternode wallet.

STEP 2: PREPARING MAIN WALLET

- Open your main wallet where all your coins are deposited.
- Go to «**Receive**» tab.
- Press the «**New address**» button and enter «**MN1**» in the «**Label**» field. **Do not** tick the «**Stealth address**» checkbox. Make it for every masternode you want to create naming them «**MN2**» and «**MN3**» correspondingly. These are your **MASTERNODE DEPOSIT ADDRESSES**, where you will deposit your coins to create masternodes.
- Send exactly **50000 BEET** to each of these addresses by one transaction. This can be done by going to «**Send**» tab and clicking on «**Add Recipient**» button. Fill in all 3 addresses and send exactly **50000 BEET** to each of them.
- Wait for **15 confirmations** of the transaction and then go to the «**Help**» ->«**Debug window**» ->«**Console**».
- Run the «**masternode genkey**» command and write down the result. The generated key is your **MASTERNODE PRIVATE KEY**. **Do not disclose it to anyone!**
- Run the «**masternode outputs**» command and write the hex numbers down. This is your **MASTERNODE TRANSACTION ID** and the digit after «**:**» is the **TX OUTPUT INDEX**.

You will get three outputs like:

```
{ «46735a7d867d33cf34925c32f38004268e131e99a582155113e77f8ca3829FG6» : «0»,
«46735a7d867d33cf34925c32f38004268e131e99a582155113e77f8ca3829FG6» : «1»,
«46735a7d867d33cf34925c32f38004268e131e99a582155113e77f8ca3829FG6» : «2» }
```

- Go to the «**Masternodes**» tab and switch to the «**My Masternodes**» tab.
- Press the «**Create**» button.
- Enter «**MN1**» into the «**Alias**» field but do not use spaces and special characters.
- Enter «**YOURIP:PORT**» into the «**Address**» field. You can find out your IP by using the [Yougetsignal](#) service. You are free to choose any port but keep in mind that it should be opened which can also be checked with [Yougetsignal](#). If the port is closed you should allow it in your firewall software or open it by configuring your router.

Add/Edit Beetle Node

Enter an Alias (friendly name) for your Master Node and its address (either clearnet IP and port or Tor onion address and port). The address should be in the format 123.456.789.123:9999 or kjdsafxjkhasdf.onion:9999. You must send exactly 50,000 BEETLE to the collateral address.

Alias*

Address*

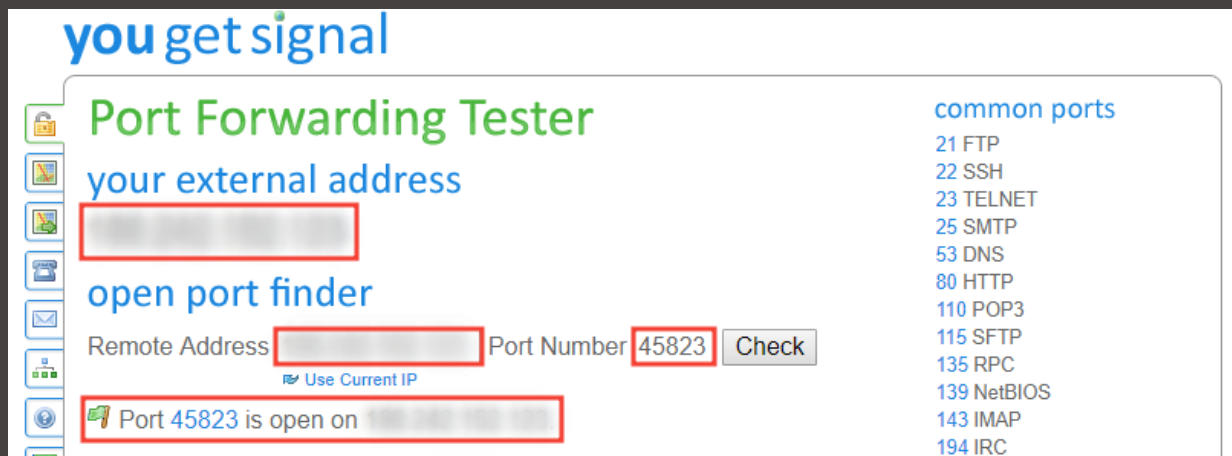
PrivKey*

TxHash*

Output Index*

Reward Address

Reward %



12. Enter the **MASTERNODE PRIVATE KEY** that you generated with «**masternode genkey**» command into the «**Privkey**» field.
13. Enter the **MASTERNODE TXID** from the «**masternode outputs**» command into the «**TxHash**» field.
«**46735a7d867d33cf34925c32f38004268e131e99a582155113e77f8ca3829FG6**» : «**0**»
14. Enter the **TX OUTPUT INDEX** from the «**masternode outputs**» command into the «**Output Index**» field.
«**46735a7d867d33cf34925c32f38004268e131e99a582155113e77f8ca3829FG6**» : «**0**»
15. Now you can press «**Ok**».
16. Repeat the process from the **6th** step for **MN2** and **MN3** but renaming **MN1** to **MN2** and **MN3** and changing the port number. When you get to the **7th** step you should use other two lines correspondingly. The 2nd line is for **MN2** and the 3rd one is for **MN3**.
17. Press the «**Update**» button and you will see that all three masternodes are in the list but have «**Not in the masternode list status**». Steps 8-15 create the masternode.conf file which is situated in the **C:\Users\Your_user_name\AppData\Roaming\Beetle** folder. You can skip these steps and create it by yourself if you want. It has the following inputs:

ALIAS IP:PORT PRIVKEY TXHASH OUTPUTINDEX

One line corresponds for one masternode configuration.

STEP 3: CONFIGURING MASTERNODES

1. Go to the «**BEET_MN1/data**» folder.
2. Open the «**Beetle.conf**» file in Notepad.
3. Paste the following into the **Beetle.conf** configuration file:
port=**PORT**
masternode=1
masternodeaddr=**YOURIP:PORT**
masternodeprivkey= **MASTERNODEPRIVATEKEY**
4. Replace the «**PORT**» text with the port for your **MN1**, «**YOURIP:PORT**» text with your external white IP address and the same port use used for your **MN1**.
5. Replace the «**MASTERNODEPRIVATEKEY**» text with the **MN1** private key you generated with «**masternode genkey**» in the main wallet for **MN1**.
6. Save it and repeat the process for **MN2** and **MN3**.

STEP 4: STARTING MASTERNODES

1. Now you can restart all your masternodes by executing «**start_beet_mn1.cmd**», «**start_beet_mn2.cmd**» and «**start_beet_mn3.cmd**» files.
2. Go to the main wallet and check that your transaction, which you made to send your coins to your masternodes, has at least **15 confirmations**.
3. Go to the «**Masternodes**» tab and switch to the «**My Masternodes**» tab.
4. If you locked your wallet before you should unlock it before the next step.
5. Press the «**Update**» button and then press the «**Start All**» button.
6. You should see «**Masternode is Running**» message in the «**Status**» field for each MN now.
7. Your wallet will lock again if it was locked previously. Do not forget to unlock it!

All Masternodes need to be active for a certain amount of blocks before they are recognized by the network and eligible for rewards.

Congratulations, your BeetleCoin Masternodes are now running!

BEETLCOIN.IO

2018